

June 2025 Centerline

June 2025
Volume 103

National Association of Women in
Construction NAWIC Chapter 356
PO Box 7455
Colorado Springs, CO 80933



Pikes Peak

Pikes Peak Chapter 356

INSIDE THIS ISSUE

- 1 President's Message/ Events
- 2 Standing Committees/Chapter Functions/Special Committees/ Board
- 3-6 Membership Announcements
- 7-13 Committee Announcements
- 14 Swag Store
- 15-17 Region/National Events
- 18 Education Corner
- 19 NAWIC Today and Career Center
- 20 Construction Humor
- 21-22 Sponsorship Forms
- 23 Social Media Form
- 24-27 Build It Up Sponsors/Ads

"I dream about 'Cheers.' Like when you go on a diet and you dream of pizza. I always think of those wonderful years. I loved working on it."
-George Wendt

Events

- 06/19/2025 Membership Meeting
- 07/10/2025 Board Meeting
- 07/17/2025 Hardhat Tour & Membership Meeting
- 08/07/2025 Board Meeting
- 08/19-08/23/2025 Annual National Conference
- 08/21/2025 Membership Meeting

I'm just returning from a much needed vacation to reset and recharge myself for the next half of 2025. It's important to recognize the need to slow down and to be still. Even if it may seem uncomfortable, that's even more reason to take time for yourself. It's hard to believe that there are only four more months of our NAWIC fiscal year. The 8th Annual Rosie Run 5K is in the books. Thank you to our committee and volunteers that made this event happen. Our June membership meeting is our 2025-2026 board elections. I would love to have all 45 of our members attend so be sure to get registered. I'm excited that there are so many new members that are on the ballot that are willing to serve. Nominations can still be made at the meeting if you would like to run for a position. We will also have an opportunity to answer any questions that you may have about our committees if you would like to join one to get involved with the chapter. Remember, you get out what you put in and your vote counts!

Samantha Walter

President

Pikes Peak Chapter 356



Standing Committees 2024-2025

Professional Development & Education/NEF – Karla Greeley • 719-747-4744 • karla@razorbackrolloff.com

Membership & Marketing – Ashley Stoever & Jessica O’Connell • membership@nawic356.org

Finance – Jessica O’Connell • treasurer@nawic356.org

Chapter Functions

Historian – Kristen Ibarra, CDT

719-304-4644 kristen.ibarra@granite-eng.com

Website – Samantha Walter

719-635-0902 info@nawic356.org

Parliamentarian – Joy Griffin

303-993-9001 joy@sadlergriffin.com

Centerline Editor – Jessica O’Connell

719-310-4848 joconnell@pyramidconstructioninc.com

Board 2024-2025

President

Samantha Walter

samanthawalter719@gmail.com

•

Immediate Past President

Kristen Ibarra, CDT

kristen.ibarra@granite-eng.com

•

Vice President

Elysa Matthews

ematthews@timberlinelandscaping.com

•

Recording Secretary

Jennifer Zezlina, RA

jenzezlina@yahoo.com

•

Treasurer

Jessica O’Connell

treasurer@nawic356.org

•

Directors

Ashely Stoever

Gina Green

Karla Greeley

Naomi Kidd

boardmembers@nawic356.org

Special Committees 2024-2025

Block Kids – Naomi Kidd • 719-632-9868 • nrkidd4ppc356@outlook.com

Bylaws – Samantha Walter • 719-649-2739 • samanthawalter719@gmail.com

CAD Competition – Angelique Kallio, CIT • 719-532-9988 • angeliqueK@tms-companies.com

Community Outreach – Samantha Walter • 719-649-2739 • samanthawalter719@gmail.com

DE&I – Joy Griffin • 303-993-9001 • joy@sadlergriffin.com

Fundraising – Jessica O’Connell • 719-310-4848 • fundraising@nawic356.org

OSHA Alliance/Safety – Greta Woldtvedt • 719-686-7482 • gretaw@aprestoration.com

Rosie Run 5K Committee – Jennifer Zezlina, RA • rosierun@nawic356.org

Social Media – Jessica O’Connell • 719-310-4848 • nawicpp356@gmail.com

Scholarship (NFSF) – NEEDS A CHAIR • ***_**_**** •

Strategic Planning – Allison “Ally” Jencson • 719-659-6618 • ally@flfloorcoatings.com

WIC Week – Elysa Matthews • 719-491-2120 • ematthews@timberlinelandscaping.com

Membership Announcements

HAPPY NAWIC- VERSARY

JOY G. - 1 YEAR

SADLER GRIFFIN LLC

DENA H. - 1 YEAR

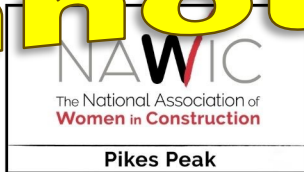
STUDENT

NAWIC

The National Association of
Women in Construction

Pikes Peak

Membership Announcements



June Membership Meeting
Thursday, June 19, 2025

BOARD ELECTIONS

Black Bear Diner

1340 Garden of the Gods Rd.
Colorado Springs, CO 80907

Networking & Order Dinner 5:30 - 6:00 pm.

There is a cost to attend this meeting.

\$5.00 for Members and \$10.00 for Non Members

Each person is responsible for the cost of their own meal.

Business Meeting to begin at 6:00 pm

Please RSVP via Zeffy By Monday June 16th, 2025 at noon

You're invited to our **June Membership Meeting & Board Elections**—an evening of connection, collaboration, and contribution to the future of our chapter!

Date: Thursday, June 19, 2025

Time: 5:30 PM – 8:30 PM

Location: 1340 Garden of the Gods Rd, Colorado Springs, CO 80907

During this important meeting, we will be holding our **annual Board of Directors elections for the 2025–2026 term**. Your voice and vote are vital as we elect the leaders who will help guide our chapter forward.

Whether you're a long-time member or new to the organization, we encourage you to attend. This event is a great opportunity to:

- Network with professionals in the construction industry
- Share ideas and experiences
- Learn more about chapter goals and initiatives

Dinner Details:

Each attendee is responsible for their own meal cost.

- **Members:** \$5.00
- **Non-members:** \$10.00

We've **switched our registration platform to Zeffy**, which allows us to avoid processing fees. When you check out, you'll see an option to donate to Zeffy—**selecting \$0.00 is completely acceptable** and will not affect your registration.

Please RSVP here: <https://www.zeffy.com/ticketing/nawic-pikes-peak-chapter-356-2025-june-membership-meeting-and-board-elections>

We look forward to seeing you there and appreciate your continued dedication to NAWIC and the advancement of women in construction.

Do you need assistance paying for membership meetings? We have members willing to assist. Reach out to the President, Samantha Walter at samanthawalter719@gmail.com or president@nawic356.org.



[Click to Register](https://www.zeffy.com/ticketing/nawic-pikes-peak-chapter-356-2025-june-membership-meeting-and-board-elections)

Membership Announcements

JULY HARD HAT TOUR & MEMBERSHIP MEETING

NAWIC
The National Association of
Women in Construction

Pikes Peak

Thursday July 17th, 2025

 **UNDER
CONSTRUCTION**



Agenda

- Meet on site @ 3:30PM **SHARP!**
- Tour: ArtSpace Colorado Springs
 - 315 E. Costilla St. Colorado Springs, CO 80903
 - Parking on the street in front.
- Personal Protective Equipment (PPE)
Required
- Membership Meeting to follow immediately after the tour @ On the Border
 - 2190 Southgate Rd., Colorado Springs, CO 80906
 - \$5 for Members
 - \$10 for Non -Members

The ArtSpace Colorado
Springs

PPE REQUIRED



Please RSVP by Monday July 14th, 2025 via Zeffy

[Click to Register](#)

We've **switched our registration platform to Zeffy**, which allows us to avoid processing fees. When you check out, you'll see an option to donate to Zeffy—**selecting \$0.00 is completely acceptable** and will not affect your registration.

Do you need assistance paying for membership meetings? We have members willing to assist. Reach out to the President, Samantha Walter at samanthawalter719@gmail.com or president@nawic356.org.

Membership Announcements

We are still

45

members!!

Remember to tell your friends!

Follow us on Facebook, Instagram, and LinkedIn.



Community Outreach

School Supply Drive

NAWIC Pikes Peak Chapter 356 will be holding a school supply drive to benefit The Hanger, a program of CASA of the Pikes Peak Region. CASA of the Pikes Peak Region is a nonprofit organization that trains and supervises volunteers to represent the best interests of victims of child abuse, neglect, and severe domestic conflict. CASA volunteers are appointed by judges to be a voice for these children in court and in the community. The desired result is that children be placed in safe, loving homes where they can thrive.

The Hanger is a store in the back of the CASA office where foster teens can shop for donated clothing and accessories free of charge. It is a simple concept that most of us take for granted, but for a foster kid, being able to choose and wear your own clothes builds self-esteem.



CASA OF THE PIKES PEAK REGION

Community Outreach

In July, The Hanger holds a back-to-school party for teens in foster care, where they can pick out all their own school supplies and a backpack. This is so important to the youth, as they do not always have the same opportunities to get fun or cool or trendy items for school, so choosing their own items and having a good variety really helps build normalcy. They light up when they see all the options from which they can choose! The Hanger has school supplies available all year long so that they can pick up what they need throughout the year. This also helps when they have emergency placements, as these teens often are unable to grab many items before being removed from their homes and school supplies are not on their mind at that time.

Teens really enjoy FUN school supplies! Look for items that are pretty, trendy, and/or have designs on them, for boys and girls, ages 13-18. Please bring your school supply donations to our June membership meeting on Thursday, June 19, or contact Samantha Walter to arrange for pick up or drop off.

Feel free to share this donation opportunity with everyone that you know! The chapter will be making one big donation of all items collected in July. Drop off date still to be determined.

OSHA Alliance/Safety

Digging Deep Into Safety: Tools. Training. Resources.

Trench collapses can be deadly. Each year, preventable trenching and excavation fatalities in the construction industry occur far too frequently. In 2024, 15 workers lost their lives due to trench collapses – the same tragic number reported in 2023. In the first three months of 2025, seven workers died in trenches in the construction industry and another seven in the mining industry. These incidents often occur when workers are buried under thousands of pounds of soil, making escape nearly impossible. Rescue efforts require highly specialized first responders and are extraordinarily difficult.

Preventing these tragedies requires a collective effort from employers, workers, advocates, the safety and health community, and government agencies. June is Trench Safety Month, and a time to raise awareness about the dangers and the best practices and resources that address them.

WE OFTEN HEAR...

“I’ve been doing it this way for years and never had an incident, why should I spend money on shoring?”

WE ALSO HEAR...

“Of course I care about the safety of my employees, but the bottom line has to work.”

HERE’S THE BOTTOM LINE: “Use the Tools”

The key rule for the safety of your workers *and* your business is easy to remember: “Use the Tools.”

Turns out, a poor safety decision is a poor business decision. Whether you are a small, medium, or large company – a contractor or a sub-contractor – selecting and using the appropriate safety tools for every job protects lives and livelihoods. Regardless of the job size, appropriate equipment is available for every need.

Experts find that year-end savings from using safety tools exceed the cost many times over of foregoing equipment. Of course, that’s before factoring in additional direct costs, such as workers compensation, fines, and penalties, and indirect costs, including interviewing, hiring, and training, associated with a preventable injury or death.

“Slope it, Shore It, and Shield It” is a formula that ensures everyone involved in trenching and excavation operations stays safe from preventable and needless harm!

WE ALSO HEAR...

“I’d like to be safe, but where can I find the training and resources?”

While “Use the Tools” is one three-word solution for excavation shoring safety, two others also apply: “Use the Training” and “Use the Resources.”



OSHA Alliance/Safety

Free Training and Resources

The [North American Excavation Shoring Association](#) (NAXSA), representing global experts in the safe and efficient use of excavation shoring equipment and practices, has partnered with the [National Utility Contractors Association](#) (NUCA), which serves the U.S. utility construction and excavation industry. Together with five other leading construction organizations, they are members of the Occupational Safety and Health Administration's [Partners for Safe Trenching and Excavation Operations Alliance](#). This Alliance promotes best practices that reduce the risks of trenching and excavation work.

Through training and safety initiatives, participation in the Alliance, and other activities, NAXSA and NUCA deliver lifesaving information and expertise throughout the many facets of the industry. Every year, thousands of contractors, subcontractors, workers, and safety officials, receive free training through each organization's offerings, which range from onsite and online training initiatives to safety events, such as:

◆ National Trench Safety Stand Down

June 16-20, 2025

An opportunity for employers to talk directly with employees and others about safety. NUCA's Stand Downs focus on trench and excavation hazards, reinforcing the importance of using trench protective systems. [Learn more about this year's stand down.](#)

◆ Trench Safety Summits

Next Summit: October 8, 2025, Monroe, WA

NAXSA welcomes NUCA as a leading sponsor of the Washington Trench Safety Summit. The Summit offers presentations and demonstrations featuring trench safety equipment and practices to create and reinforce continued awareness and education for management and workers alike. [Learn more about Washington's trench safety summit.](#)

NAXSA, NUCA, and OSHA, all offer practical and easily accessible resources for *your* excavation shoring project. *Use the links below to access frequently asked questions, tips, podcasts, and other materials, including presentations by experts and live trench safety demonstrations.*

- [NAXSA Resources](#)
- [NUCA Resources](#)
- [Trenching and Excavation Safety Taskforce \(T.E.S.T.\) Resources](#)
- OSHA's [Trenching and Excavation Safety and Health Topics Resources](#). For further assistance, employers may also contact their [local OSHA office](#) or the [On-Site Consultation Program](#).

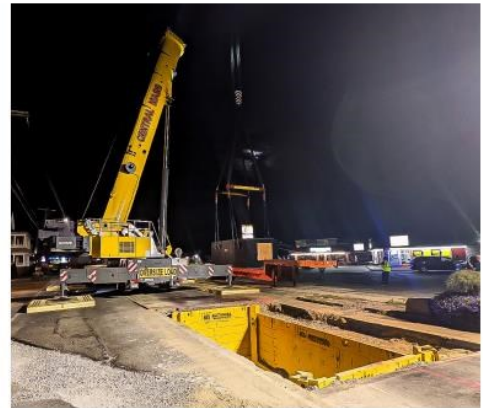
CONCLUSION

Trenching and excavation injuries and fatalities are preventable when the right steps are taken. Prioritizing safety is not just a good practice – it's a responsibility. **Use the Tools. Use the Training. Use the Resources.** These simple actions can make all the difference in protecting lives and ensuring everyone goes home safely at the end of each day.

OSHA Alliance/Safety

JUNE IS TRENCH SAFETY MONTH!

Safety Training and Protective Systems Save Lives



Trench Safety Stand Down Week | June 16–20, 2025

Make plans for your company to participate in the 2025 NUCA Trench Safety Stand Down (TSSD) Week. Being a part of our popular 9th annual TSSD Week will help educate your employees on trenching hazards at the jobsite.

OSHA's National Emphasis Program on Trenching and Excavation is a high agency priority. Sponsored this year by NUCA National Partners United Rentals and Sunstate Equipment Co., NUCA and OSHA have teamed up for our annual trench safety program. More than 24,100 employees on 2,143 jobsites from 507 companies participated in the 2024 TSSD.

Every company or organization that holds a TSSD will receive a certificate of participation, as well as hard-hat stickers for every employee who participated. Recognition will also be given in NUCA publications. Please plan for your company to be a part of this vital industry safety event this year.

2025 TSSD Sponsored By



For more details and TSSD materials: nuca.com/tssd #TSSD25 #TrenchSafetyMonth

OSHA Alliance/Safety

TRENCHING SAFETY

5 Things You Should Know to Stay Safe



1

Ensure there's a safe way to enter and exit.

See 1926.651(c)



2

Trenches must have cave-in protection.

See 1926.652(a)



3

Keep materials away from the edge of the trench.

See 1926.651(j)



4

Look for standing water or other hazards.

See 1926.651(h)



5

Never enter a trench unless it has been properly inspected.

See 1926.651(k)



Southern Colorado Construction Career Days

Every year, we host Southern Colorado Construction Career Days, an event designed to introduce students to the vast array of opportunities in the construction sector. With hands-on demonstrations, real-world simulations, and direct interactions with industry professionals, students gain invaluable exposure to career paths that help build the foundation of our communities. Our next event is scheduled for **September 25, 2025**.

Your generous support plays a crucial role in making this event a success. Donations from organizations like yours enable us to provide students with safety gear, lunch, educational materials, and interactive exhibits. Contributions also help us expand outreach efforts, ensuring that more students have access to these valuable career exploration opportunities.

We invite you to contribute in one or more of the following ways:

- **Sponsorship Opportunities:** Gain recognition for your company while supporting a meaningful cause. Reach out to Jessica O'Connell for a sponsorship form outlining contribution levels and benefits.
- **In-Kind Donations:** Contributions such as Gift Cards (\$10-15 each), safety glasses, food, and water help offset event costs and enhance the experience for participants.
- **Volunteer Engagement:** Industry professionals are encouraged to share their knowledge and experiences with students.
 - **Activity Provider:** Set up a "Hands On" Activity for the students to participate in which represents a career area: architecture engineering, building crafts/trades, highway construction, heavy equipment operator, and more.
 - **Group Leader:** You will be assigned 10-15 students and given a schedule as you accompany them as they participate in activities throughout the day.
- **General Volunteer:** You will help with one or more of the following support services: registration, setting up, take down, lunch, traffic control, and other general support services.

Your support is not only an investment in the future workforce but also a commitment to strengthening the construction industry as a whole. If you have any questions or need further information, please feel free to reach out to at fo@sococareerdays.com. All this information and registration are available on our website, www.sococareerdays.com.

Thank you for considering this opportunity to make a lasting impact. Together, we can inspire the next generation of skilled workers and ensure a strong future for the construction industry.

Sincerely,
Southern Colorado Construction Career Days Foundation



REGISTER NOW

356 Swag Store

Did you know you can order NAWIC
Pikes Peak Chapter 356 Swag!!!

[Order Now](#)

Fundraising

Hello NAWIC Pikes Peak Chapter 356 Members,
Want to Make a Difference?

NAWIC Pikes Peak Chapter 356 would love to gear up for some exciting **fundraising activities**, and we're looking for passionate, motivated members to jump in and help us make it happen!

From planning events and gathering sponsors to spreading the word — **there's a way for everyone to get involved.**

- * Bring your ideas
- * Help organize events
- * Connect with the community
- * Boost awareness of our mission

AND HERE'S A BONUS!

The **first person to comment** on this will receive **6 FREE tickets** to the next **membership meeting raffle!** Don't miss your chance to get in on the action — and maybe win something amazing while you're at it.

Let's build something great together.

Jessica O'Connell

fundraising@nawic356.org

Fundraising Chair

NAWIC Pikes Peak Chapter 356

2025 Annual Conference

2025 NAWIC Annual National Conference

AUGUST 19 - 23, 2025
BOSTON, MA

Celebrating 70 Years of
Leadership & Legacy



Insights from visionary
keynotes



Network with 1,000+
professionals nationwide

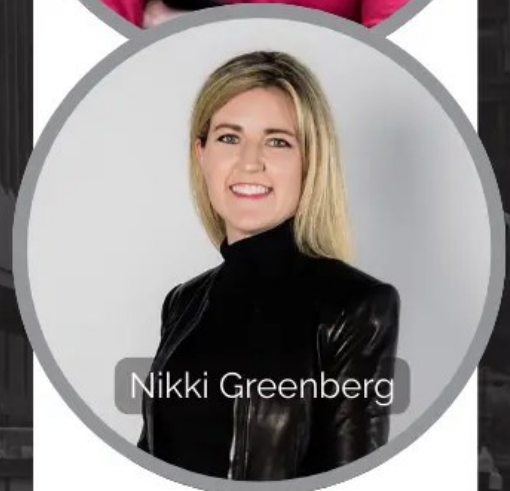


29 Skill-Building breakout
sessions

*Honoring 70 Years. Building a Bold Future.
Together, We Rise.*



Emily Pilloton-Lam



Nikki Greenberg

NAWIC
The National Association of
Women in Construction

REGISTER NOW



Dear Employer,

The National Association of Women in Construction (NAWIC) is committed to helping companies build high-performing teams through leadership development, cross-sector collaboration, and timely industry insights. Our 70th Annual Conference—*Together We Rise*—offers a powerful opportunity for construction professionals to return with sharper skills, stronger networks, and renewed energy.

NAWIC's 2025 Annual Conference will take place August 20–23 in Boston, Massachusetts. This milestone event delivers high-impact education and professional development for attendees at every career stage. With content spanning field operations, business practices, leadership, and industry trends, participants can customize their experience to align with their goals and your company's priorities.

This year's keynote speakers include:

- **Emily Pilloton-Lam**, founder of *Girls Garage* and a nationally recognized leader in community-based construction and design.
- **Nikki Greenberg**, a futurist and innovation strategist helping the built environment navigate emerging technologies.

Conference programming includes hands-on labs, jobsite tours, and curated sessions across technical, leadership, and business topics—designed to provide attendees with immediate, applicable insights. Whether attendees are returning or participating for the first time, the program is designed to deliver immediate value through expert-led sessions and meaningful peer connections.

If a member of your team expresses interest in attending, I encourage you to support their participation. It's an investment not only in their growth—but in your company's future. Attendees return with practical tools, broader networks, and a deeper commitment to building resilient, forward-looking teams.

Thank you for supporting the advancement of women in construction. I hope to see your team—and perhaps you—in Boston this August. For more details, including the full agenda and registration information, visit www.nawic.org/annualconference.

Warm regards,

Kelly Aust
NAWIC National President



2025 PSW Fall Conference

SAN DIEGO

PACIFIC SW REGION FALL CONFERENCE

OCTOBER 10-11, 2025

REGISTRATION

**Register
Now**

Name:

Company:

Address:

City, ST:

Chapter:

Email:

First-Timer? Y ☐ N ☐

Dietary Restrictions? Y ☐ N ☐

Members	Qty	Cost
Early Bird! Attendee Registration (March 31-May 31)	<input type="text"/>	\$195
Regular Attendee Registration (June 1 - September 17)	<input type="text"/>	\$225
Late Attendee Registration (September 18 - October 3)	<input type="text"/>	\$240

Non-Members/Guests	Qty	Cost
Early Bird! Attendee Registration (March 31-May 31)	<input type="text"/>	\$235
Regular Attendee Registration (June 1 - September 17)	<input type="text"/>	\$250
Late Attendee Registration (September 18 - October 3)	<input type="text"/>	\$270

Parking \$40/overnight & 20% off Day

Extra Meals - Saturday Breakfast	<input type="text"/>	\$61
Extra Meals - Saturday Lunch	<input type="text"/>	\$102



UNITED WE BUILD, ACHIEVE, AND SUCCEED

**Hotel
Information**



WYNDHAM

San Diego Bayside

1355 North Harbor Drive

San Diego CA 92101

800-996-3425

Hotel Room Block Deadline

September 18, 2025

Complimentary Airport Shuttle

Room Rate \$239+/per night

Complimentary WiFi in Room

NAWIC2025

Group Code 10092025NAWIC

**Payment
Information**

Check Payable to: **NAWIC PSW Regional Fund**

Mail Checks to: Myrna Smith

1012 Crosby St, El Cajon, CA 92021

NAWIC
The National Association of
Women in Construction

Pacific Southwest Region

REGISTRATION



PSW Conference Link

Educational Corner

NEF RESOURCES

*Check out the awesome website with
all the education updates and*

**BUILD.
LEAD.
SUCCEED.**



Powered By:
Touchplan



THE
OFFICIAL
PODCAST
of

NAWIC
The National Association of
Women in Construction

Podcasts

Webinars

[CLICK TO REGISTER](#)

24 JUNE
1:00 pm – 2:30 pm



Create Space For Others
Different Than You

[CLICK TO REGISTER](#)

25 JUNE
11:00 am – 12:00 pm



From Election To Action! Your
Roadmap To Responsible
Leadership



READ ALL ABOUT IT...

[Click to preview](#)

NAWIC Today publication



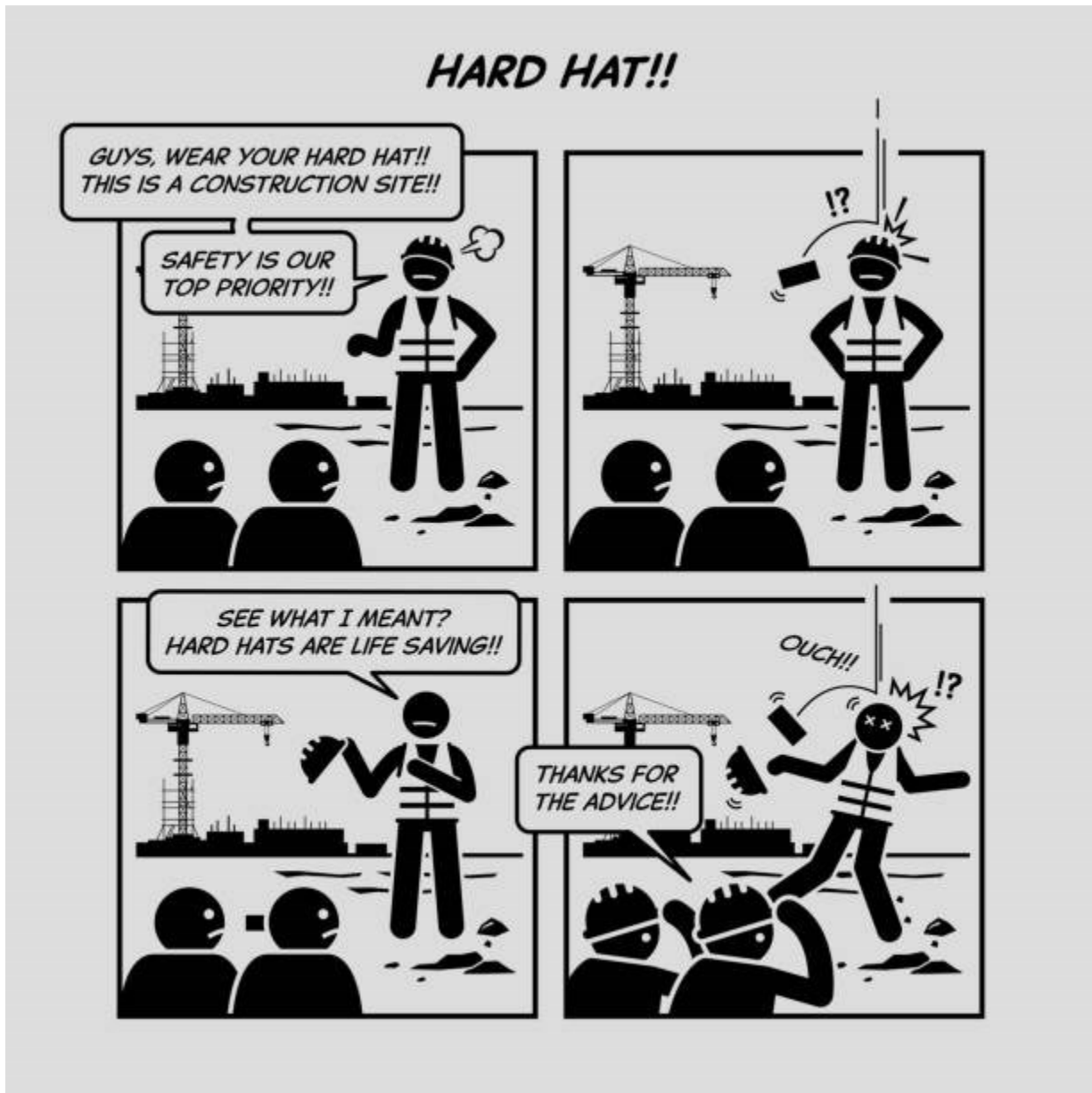
The Connection

Looking for a change or a new career in construction?

Visit NAWIC's awesome job site search for jobs all over the U.S!

<https://nawic-jobs.careerwebsite.com/jobs/>

Construction Humor



Prosecuting Attorney: Why were you digging a hole in First Avenue?
Dr. Peter Venkman: Well, there's so many holes already in First Avenue we didn't think anyone would notice.



Pikes Peak

PIKES PEAK CHAPTER 356 CHAPTER SPONSORSHIP FORM

NAWIC's core purpose is to enhance the success of women in the construction industry and our chapter's goal is to help educate and promote leadership to women in the construction industry. A NAWIC sponsorship allows companies to annually demonstrate commitment and support of these values within our community.

With a variety of sponsorship opportunities available, sponsors like you allow the leadership and membership of our chapter to execute programs that introduce construction as a viable career path, promote construction trades as another alternative to a successful career choice, work with students from elementary to high school with our Block Kids and Design Drafting Competitions, and introduce a wide variety of professional development and education to promote professional growth.

SPONSORSHIP LEVELS

Build It Up Sponsorships at all levels include company logo on the welcome page of the chapter website with a link to the company's website, a specific sized business ad in our monthly chapter newsletter, the Centerline, recognition at each chapter meeting and events, and other benefits as outlined below. The sponsorship period is October thru September.

- Build It Up **Platinum** Sponsor \$2,000.00 - Includes all items listed above, with a full-page ad in the Centerline, one annual corporate membership, and \$500.00 applied to two chapter events of your choice (\$250.00 for each event).
- Build It Up **Gold** Sponsor \$1,500.00 – Includes all items listed above, with a full-page ad in the Centerline, and \$500 applied to two chapter events of your choice (\$250.00 for each event).
- Build It Up **Silver** Sponsor \$1,000.00 - Includes all items listed above, with a 1/2-page ad in the Centerline, and \$500.00 applied to two chapter events of your choice (\$250.00 for each event).
- Build It Up **Bronze** - \$500.00 Includes all items listed above, with a 1/4-page ad in the Centerline, and \$250.00 applied to one chapter event of your choice.

For more detailed information regarding our chapter events and programs, please contact our chapter president at president@nawic356.org or visit our chapter website, www.nawic356.org, for more details.



Pikes Peak

Yes! I would like to partner with NAWIC Pikes Peak Chapter 356 to help fund educational and service projects in the construction industry within our community. I understand my sponsorship will also help with NAWIC Education Foundation programs held throughout the year.

Company Name: _____

Company website: _____

Contact Name: _____

Contact Email address: _____

**** Please email your company logo to info@nawic356.org ****

Sponsorship Level Selected:

____ Platinum \$2,000.00 ____ Gold \$1,500.00 ____ Silver \$1,000.00 ____ Bronze \$500.00

I would like a portion of my donation to be applied to the following chapter events:

Please select two chapter events for a Platinum, Gold, or Silver sponsorship and one chapter event for a Bronze sponsorship.

____ [NEF Block Kids](#)

____ [Rosie Run 5K](#)

____ [NEF Design Drafting](#)

____ [Katie Trapp Conference Fund](#)

____ [Women in Construction \(WIC\) Week](#)

____ [Annual Installation & Awards Ceremony](#)

I would like to make an additional donation of _____ to the following chapter event(s): _____.

***Total sponsorship and donation amount:** _____

Make checks payable to and mail to:

NAWIC Pikes Peak Chapter #356
PO Box 7455
Colorado Springs, CO 80933

***Email Credit Card Payment information to treasurer@nawic356.org (*3.5% convenience fee applies):**

Name as it appears on Credit Card: _____

Credit Card Number: _____

Expiration Date: _____ CVV Code: _____

Billing Zip Code: _____ Signature: _____



Pikes Peak

NAWIC Pikes Peak Chapter 356 Social Media Post Request Form

Please fill out in the information below. Email questions, form, and photos/videos nawicpp356@gmail.com.

Date of Request:

Name/Committee:

SM Post Date:

****Please note, all Social Media posts are subject to review. Post content should remain NAWIC relevant and not include political/religious affiliations. ****

Repeat Post? If so, how many times? When?

Where would you like this post (please check): ☐ Facebook ☐ Instagram ☐ LinkedIn

Post Caption:

Please write the caption that you would like to be uploaded with the post. Provide a description in the notes below for the purpose of the post, information on potential events (date, time, location, etc.), whatever information may be needed.

Additional Notes/Comments:

Would you like to have the post boosted/promoted/advertisement? If yes, what is your budget?

SILVER SPONSORS



TIMBERLINE
Landscaping

PLATINUM SPONSOR



PLATINUM SPONSOR



Asphalt

Paving
Patching
Seal Coat
Crack Seal
Milling

Concrete

Curb & Gutter
Flatwork
Slab on Grade
Decorative

Grading

Overlot
Rough Grade
Fine Grade
CTS
Soil Stabilization

Trucking

Low-Boy
End Dump
Belly Dump
Tandem
Retail
Aggregate



3075 Janitell Road, Suite 200, Colorado Springs, CO 80906

719-576-7600 * www.PyramidConstructionInc.com * info@pyramidconstructioninc.com



Family Owned & Operated Since 2002
General Contractor & Sub-Contractor

Advertise in the Centerline!



We are offering you an opportunity to advertise in our monthly NAWIC Newsletter "The Centerline".

The Colorado Springs newsletter is distributed to our members, posted on our website, sent to our Regional Director.

Business Card Size	\$35.00
1/2 Page	\$75.00
Full Page	\$100.00



Pikes Peak

4 - 6 PM Every 2nd Tuesday

HARD HAT HAPPY HOUR

FOOD & DRINK SPECIALS

FOOD & DRINK SPECIALS

For people in construction and service industries!

**Meet Industry Peers
Come as You Are
Have Fun**

5853 Palmer Park Blvd

Hosted By:  **Buzzer Crow Bistro**

 **Gerder Shirts**

 **FRONTLINE**
FLOOR COATINGS
POLISHING EXPERTS